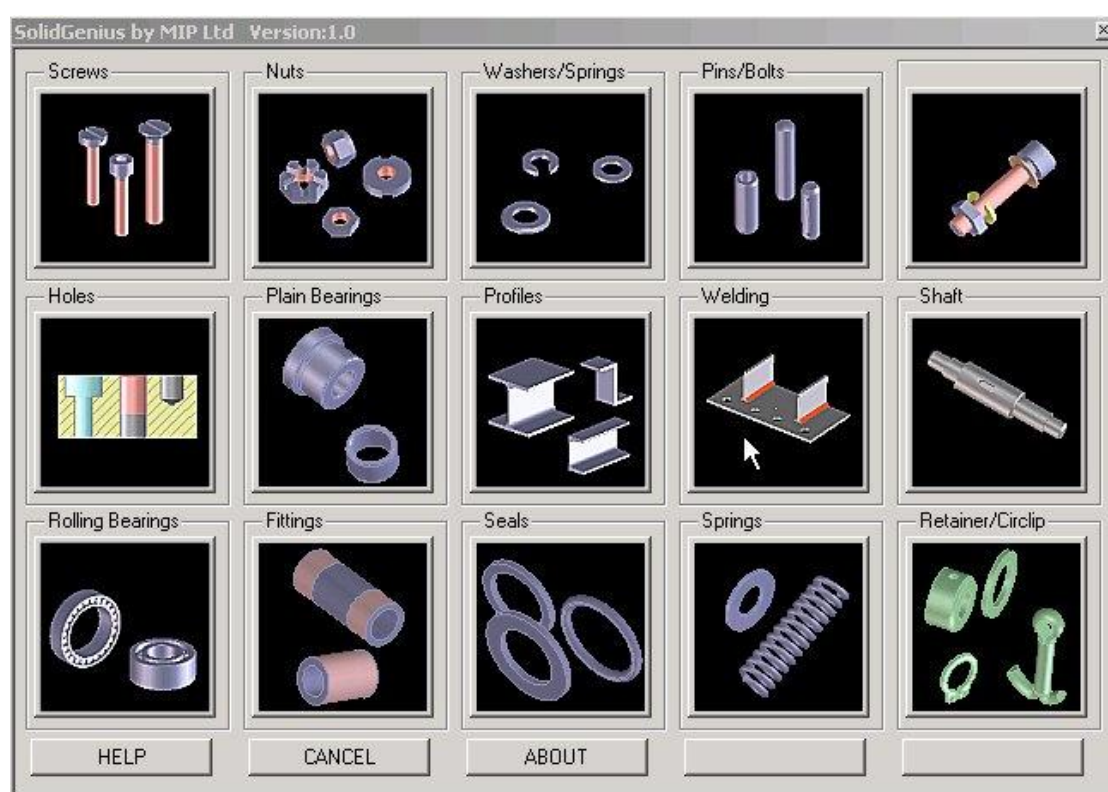


Quick Start Guide

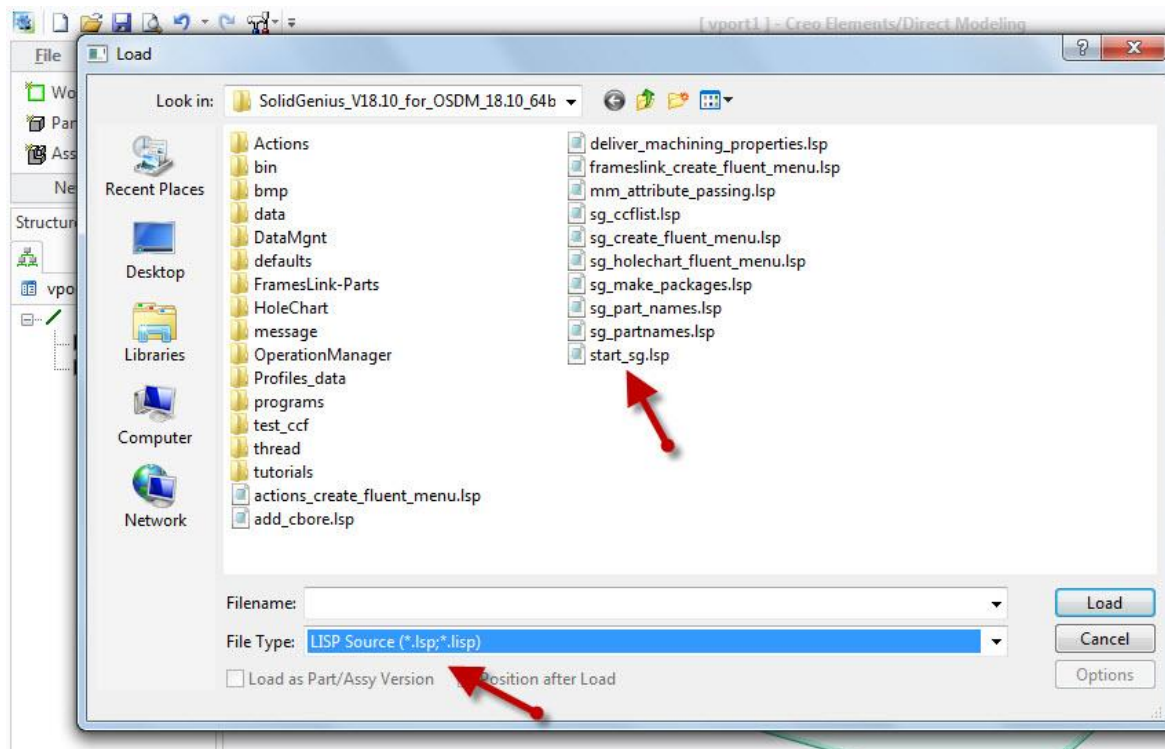
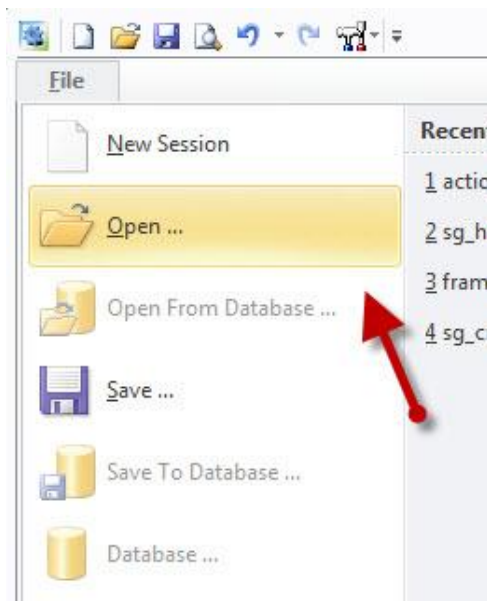


SolidGenius Tutorials

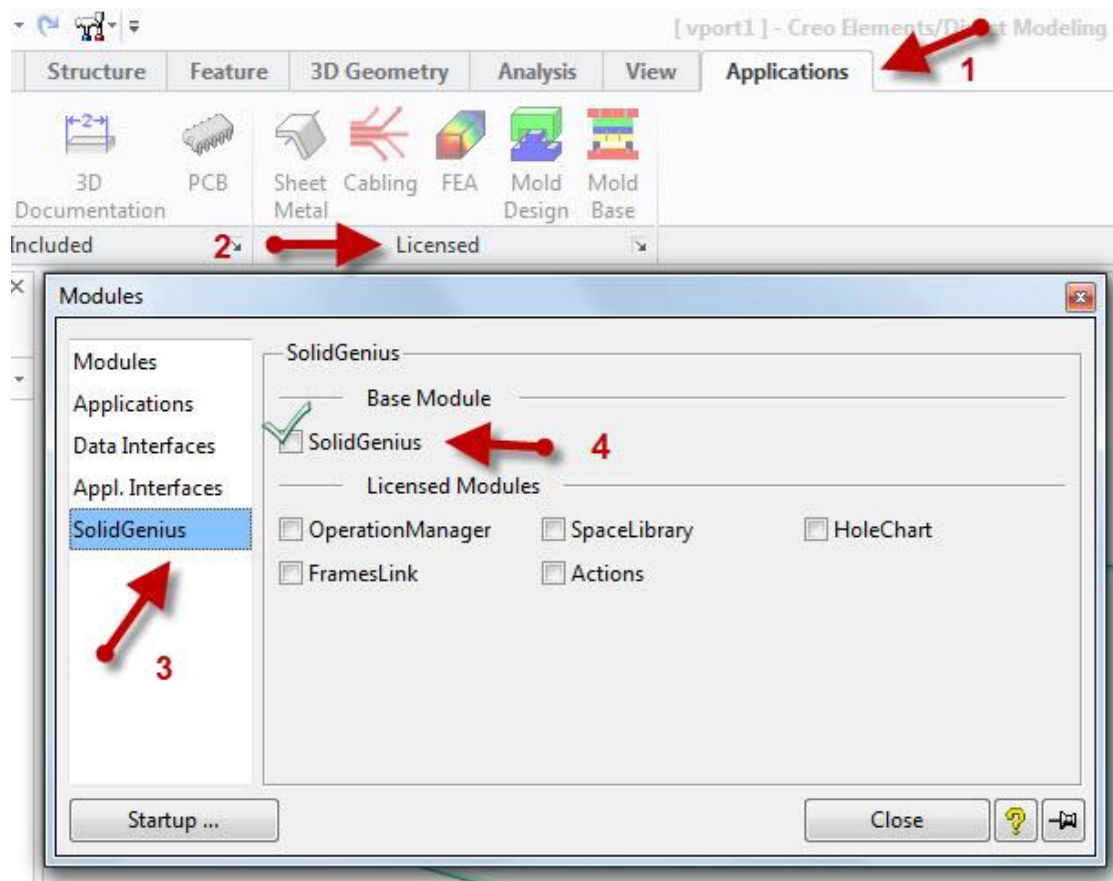
Tutorial: 4

Subject: Quick Start guide SolidGeniusV18, V19 and V20

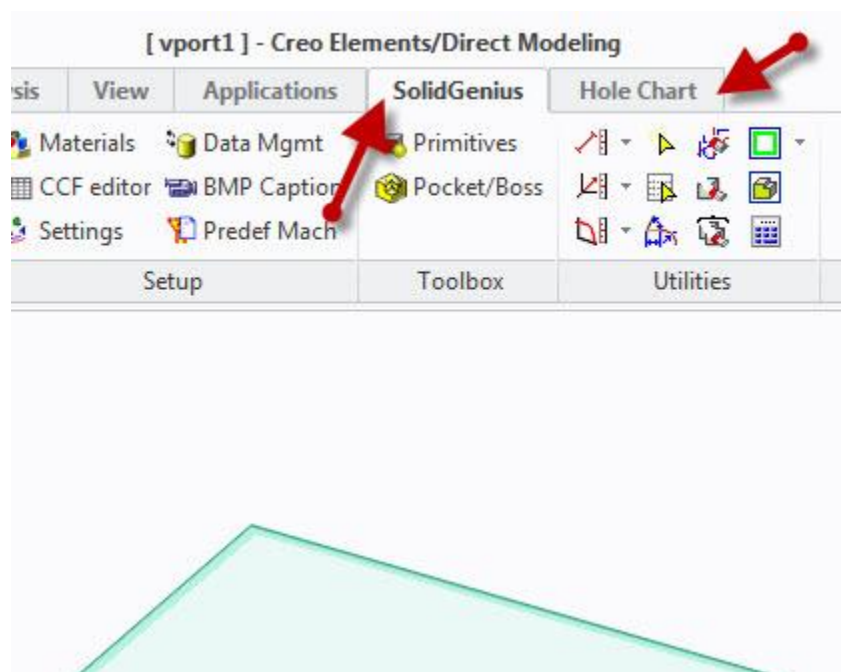
1) Load the program: Use the command “Open” from the “File” Menu and put the File Type to “LISP Source” and select the file “start_sg.lsp”



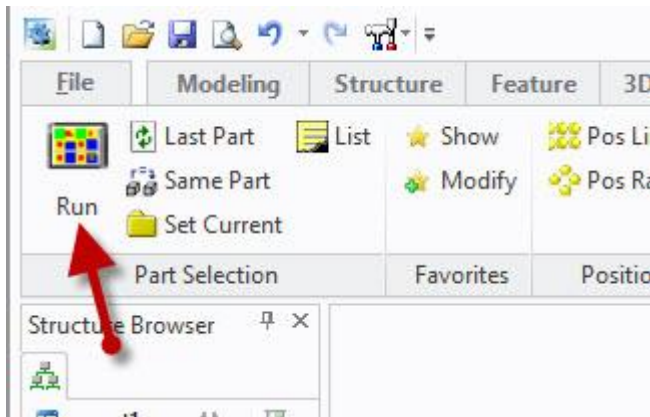
2) **Start the Modules:** Go to the tab “Applications” and select group “Licensed”. Then go to “SolidGenius” and select SolidGenius by checking the small box next to it.



Two New Tabs “SolidGenius” and “Hole Chart” are automatically added to the main task bar



3) Run the program



The main SolidGenius Menu will appear

