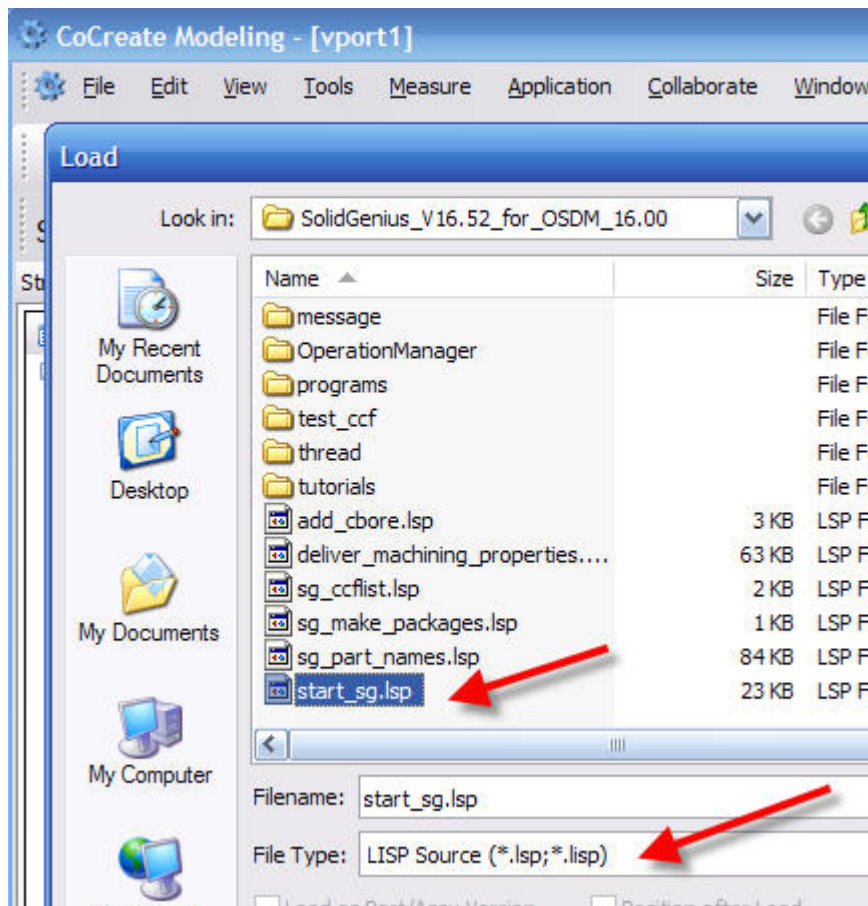


SolidGenius Tutorials

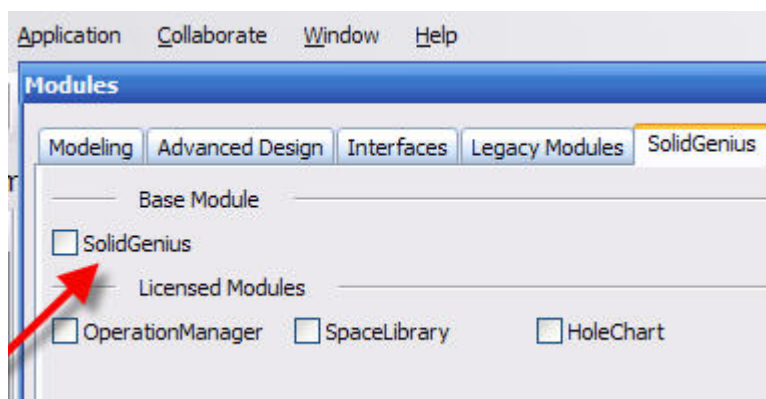
Tutorial: 0

Subject: Quick Start guide

1) Load the program: Use the command “Load” from the “File” Menu and put the File Type to “LISP Source”



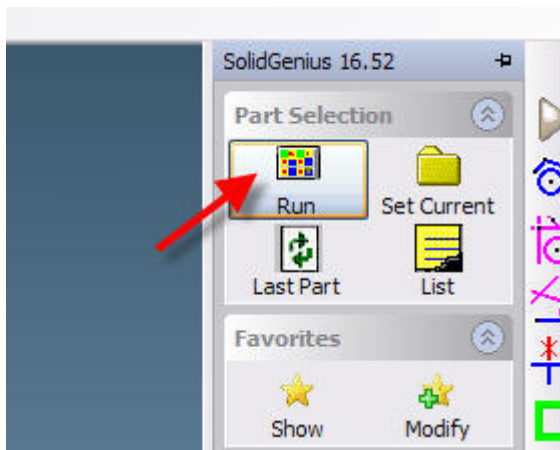
2) Start the Module: Go to the “Application” and then select “Modules”. Here you select the SolidGenius by checking the small box next to SolidGenius



3) **Two New Buttons** are automatically added to the end of the main task bar



4) **Run the program**



5) **The main SolidGenius Menu** will appear

